



New Rough Hey, Ingol, Preston

£850 Per Calendar Month

Ben Rose Estate Agents are pleased to present to the rental market this well-presented two-bedroom end-terrace home, ideally located in the heart of Ingol, Preston. Perfect for a couple or single occupier, this property offers a comfortable and well-connected living environment. The property has been refurbished throughout, featuring a contemporary fitted kitchen, fresh neutral décor, and new carpets, creating a modern and comfortable living space. Situated just a short distance from Preston city centre, the home benefits from excellent transport links, including nearby bus routes, Preston train station, and easy access to the M55 and M6 motorways. A wide range of local amenities, including shops, schools, and parks, are also within convenient reach.

Internally, the ground floor comprises a welcoming entrance hallway with a staircase leading to the upper level, a spacious lounge with a large front-facing window allowing plenty of natural light, and a newly fitted kitchen with stylish cabinetry, an integrated oven and hob, and space for freestanding appliances.

Upstairs, you will find two well-proportioned double bedrooms, with the master bedroom benefiting from integrated storage. A modern three-piece family bathroom, complete with an over-the-bath shower, completes this level.

Externally, the property offers ample parking to both the front and rear. To the rear, there is a generously sized garden featuring a lawn and flagged patio, providing an ideal space for relaxing or entertaining.

Early viewing is highly recommended to avoid potential disappointment.

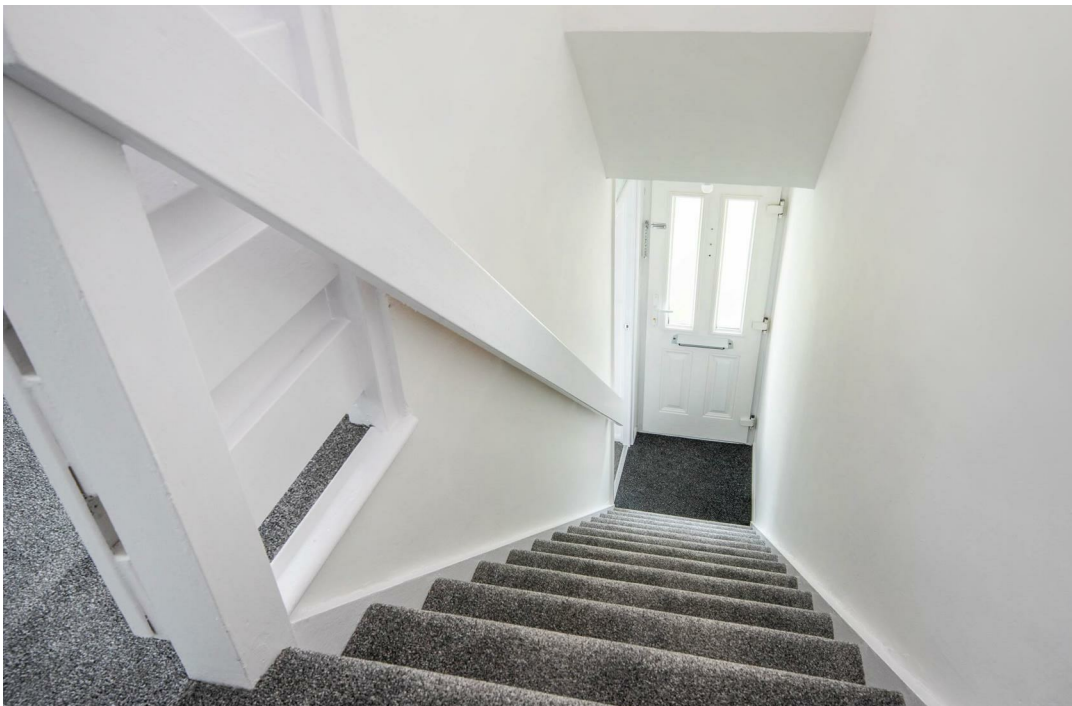












We do our best to ensure that our sales particulars are accurate and are not misleading but this is for general guidance and complete accuracy cannot be guaranteed. We are not qualified to verify tenure of a property and prospective purchasers should seek clarification from their solicitor. All measurements and land sizes are quoted approximately. The mention of any appliances, fixtures and fittings does not imply they are in working order.

